

Please read *Guidelines for Grading Theory Tests*

Points

1. Major Key Signatures 7



A^b M C[#]M G^bM D^M E^bM B^M B^bM

2. Minor Key Signatures 6

d minor, c[#] minor, b minor, c minor, f minor, f[#] minor

3. Scales - Writing 3

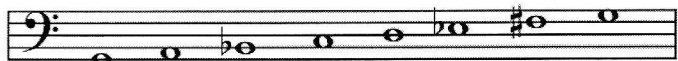
F[#] Major



b^b minor, natural form

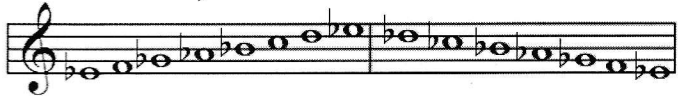


g minor, harmonic form

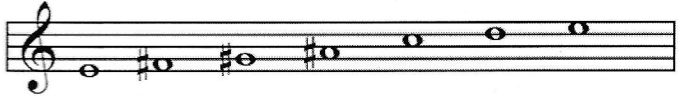


4. Scales - Adding Accidentals 3

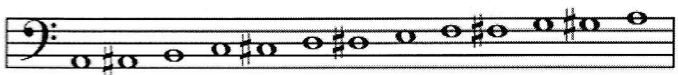
e^b minor, melodic form (descending scale must have all accidentals)



Whole Tone



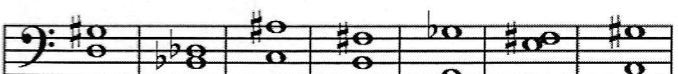
Chromatic



5. Circle of Fifths 3

- a. (G Major)
- b. B Major
- c. a minor
- d. E^b Major

6. Intervals - Writing 7



A⁴ m³ A⁶ P⁵ d⁸ M² M⁷

Points

7. Triads - Naming* (Do not deduct points if student adds incorrect figured bass.) 6

A Augmented, D^b Major, b^b minor, f[#] minor, E Augmented, c diminished

8. Figured Bass 6

6 5 6 6 6 5
4 3 4 3 3 3

9. Seventh Chords - Adding Accidentals 5



c[#] dim 7 F Dom 7 B^b Dom 7 a dim 7 D Dom 7

10. Dominant Seventh Chords - Keys 5

F[#] Major, D Major, G^b Major, B Major, E^b Major

11. Scale Degree Names 5

(Tonic), Mediant, Dominant, Supertonic, Subdominant, Submediant

12. Chord Progression 1

- i V ii^o V7 VI
- i IV V V7 VI
- i iv ii^o V7 VI

13. Chord Progression Questions 2

- a. g minor
- b. deceptive

14. Transposition 1



15. Modes 2

- a. Mixolydian
- b. Aeolian

* When students are asked to write out "Major" or "minor," do not deduct points if they write "M" or "m" legibly, or use abbreviations "Maj.," "maj.," "Min." or "min."

